

**The 4 main eras of Ancient Greek pottery**



**The Classical Period (500-300 BCE) –**

For more information, search: “red-figure technique Greek pottery”.

Remember the black and red!

**The Archaic Period (800-500BCE) –**

For more information, search: “Proto- Corinthian pottery”.

Remember the black and brown!

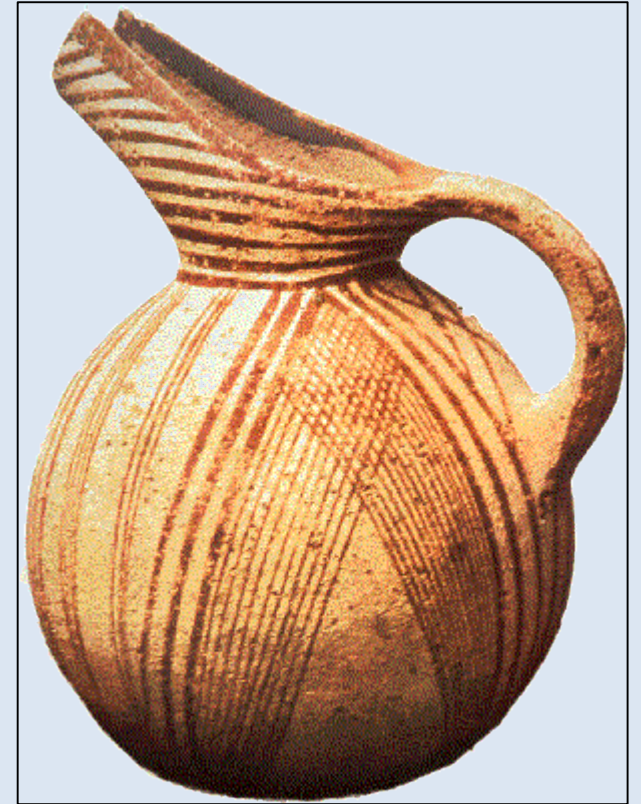
**Dark Ages Part 2 (1000-800 BCE)**

For more information, search: “Maeander design”.

Can you see the bold linear lines?

**Dark Ages Part 1 (1000BCE)**

For more information search: “Minoan Crete pottery” and “Mycenaean mainland civilisations pottery”. Can you see the simple shapes?



### **Dark Ages Part 1 (1000BCE)**

For more information search: "Minoan Crete" and "Mycenaean mainland civilisations".

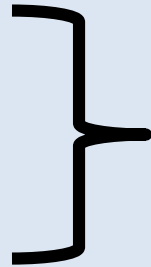
Can you see the simple shapes?





## **Dark Ages Part 2 (1000-800 BCE)**

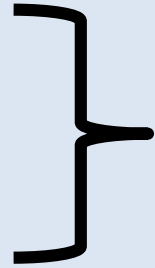
For more information, search: “Maeander design”.  
Can you see the bold linear lines?



**The Archaic Period (800-500BCE) –**  
For more information, search: “Proto- Corinthian  
pottery”.  
Remember the black and brown!







**The Classical Period (500-300 BCE) –**  
For more information, search: “red-figure  
technique Greek pottery”.  
Remember the black and red!

